



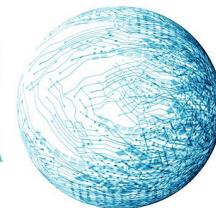
Run Run Shaw Library

香港城市大學
City University of Hong Kong



2024 JULAC LIBRARIES FORUM

INNOVATING IN THE DIGITAL ERA



Engaging Students Through Innovative Library Initiatives

Presented By:

Ms. Jessie CHU

Head of Access Services

Mr. Lewis LI

Head of Instruction and Reference Services

Run Run Shaw Library, City University of Hong Kong



CityU



Run Run Shaw Library

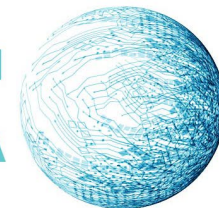
香港城市大學
City University of Hong Kong

JULAC

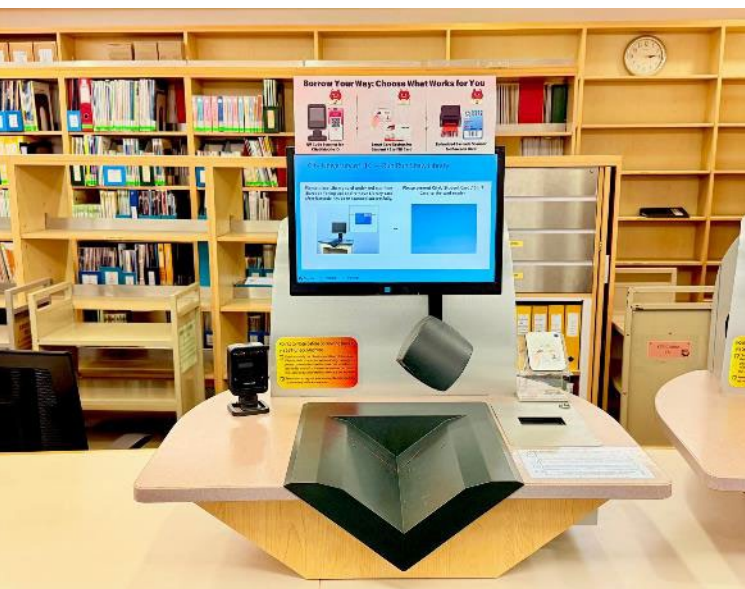


2024 JULAC LIBRARIES FORUM

INNOVATING IN THE DIGITAL ERA



Smart Library Service



Self-Service Stations

Smart Pickup System

CityU Mobile ID



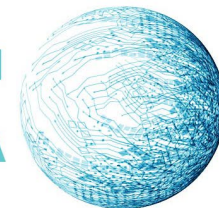
Run Run Shaw Library

香港城市大學
City University of Hong Kong



2024 JULAC LIBRARIES FORUM

INNOVATING IN THE DIGITAL ERA



Libratorium

Premier Hub for Dynamic Team-based Learning and Collaboration at CityU Library

Dedicated specifically for university team-based learning and collaboration. Emerge as a vibrant hub fostering knowledge transfer, enhancing problem-solving skills, and encourages creative thinking through teamwork.

Creative Space





Run Run Shaw Library

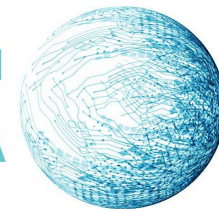
香港城市大學
City University of Hong Kong

JULAC



2024 JULAC LIBRARIES FORUM

INNOVATING IN THE DIGITAL ERA



Libratorium



- 5 E-whiteboards
- Projector with the iPad Control Panel
- PA System with wireless microphones
- Desktop PC



- 60 Seats
- Modular Tables and Chairs



Academic & Administrative Staff are eligible to make advance bookings





Run Run Shaw Library

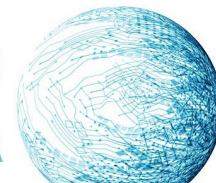
香港城市大學
City University of Hong Kong

JULAC



2024 JULAC LIBRARIES FORUM

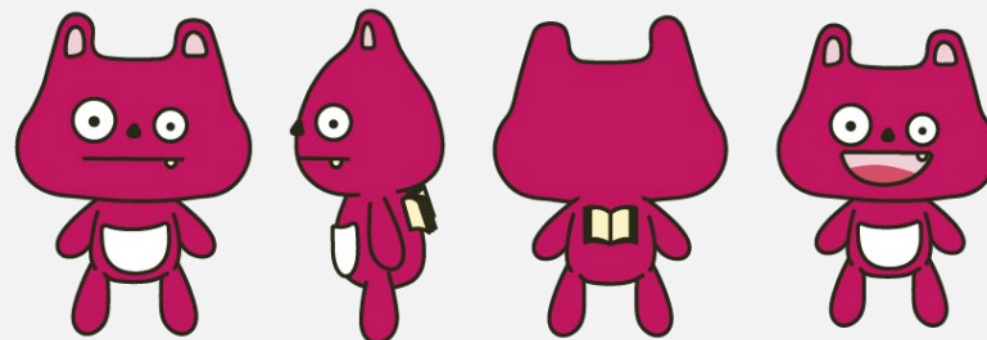
INNOVATING IN THE DIGITAL ERA



The Library Mascot, born in September 2024, stands as a distinguished ambassador for the Library, fostering connections with students, faculty, and the esteemed CityUHK community

We build the
Library Brand
with compassion
and approachability

Library Brand





Run Run Shaw Library

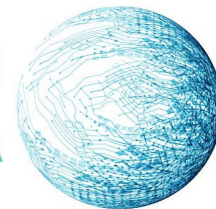
香港城市大學
City University of Hong Kong

JULAC

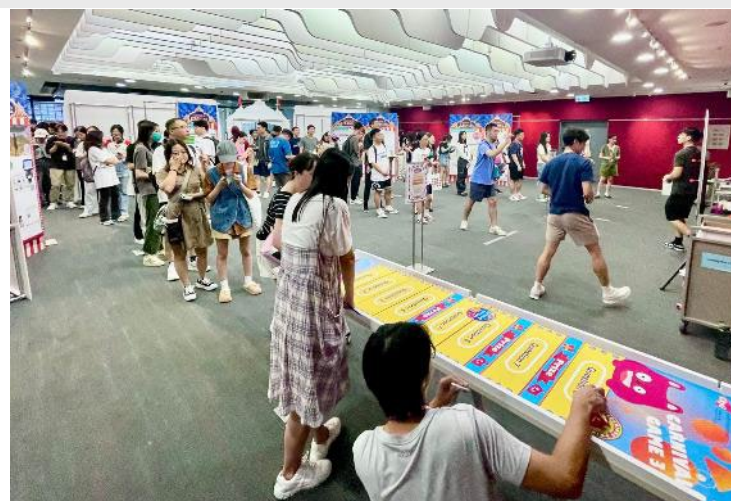


2024 JULAC LIBRARIES FORUM

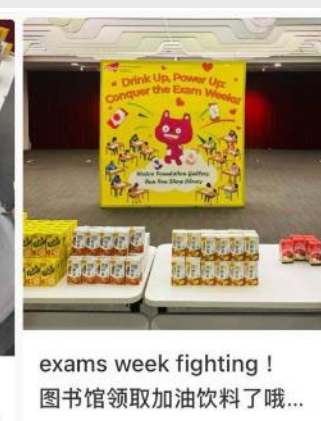
INNOVATING IN THE DIGITAL ERA



Library Orientation “A Carnival of Learning”



Library's Exam Cheer “Enjoy Free Drinks on Us!”





Run Run Shaw Library

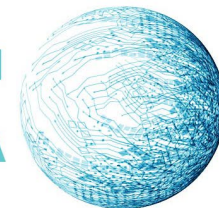
香港城市大學
City University of Hong Kong

JULAC



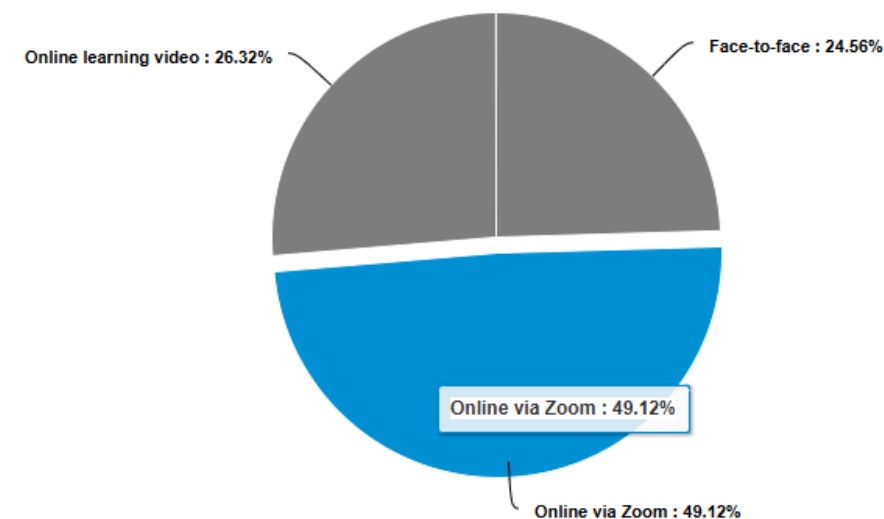
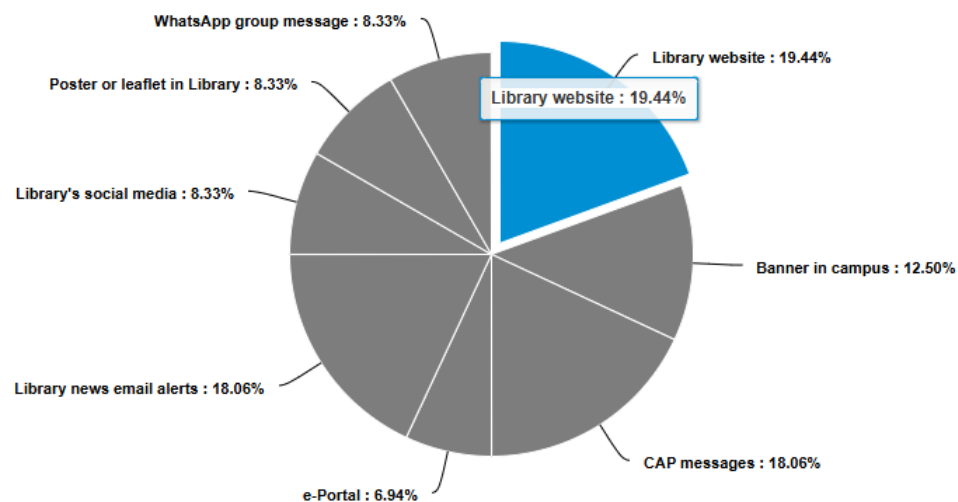
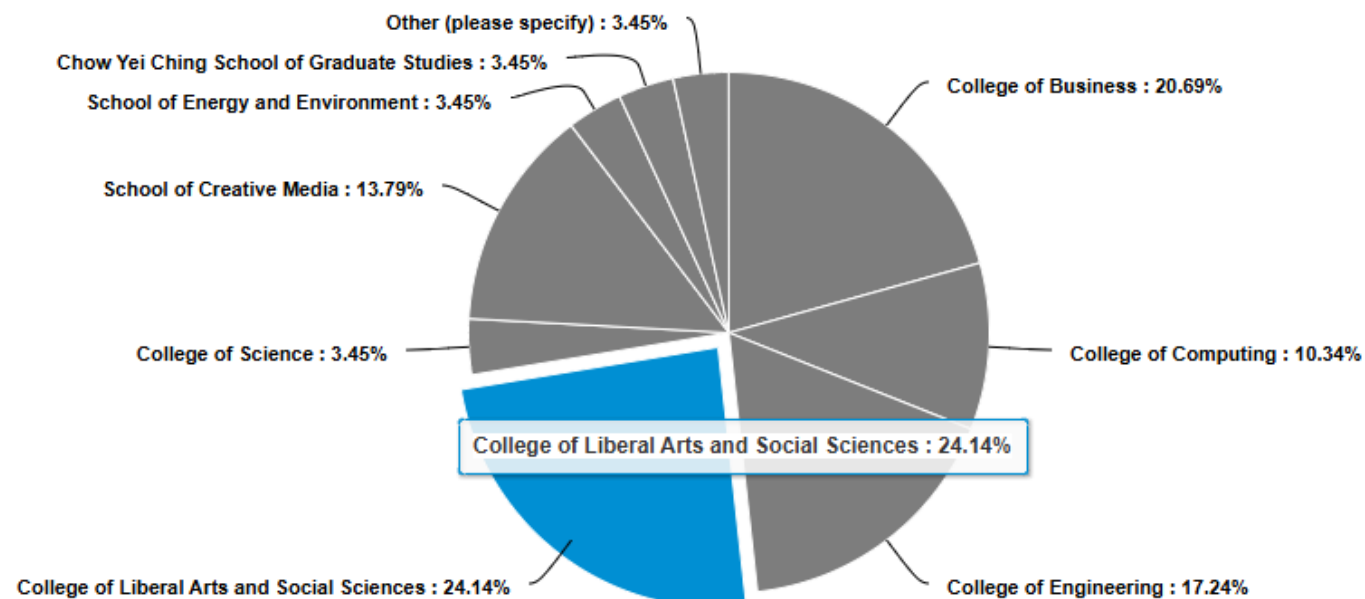
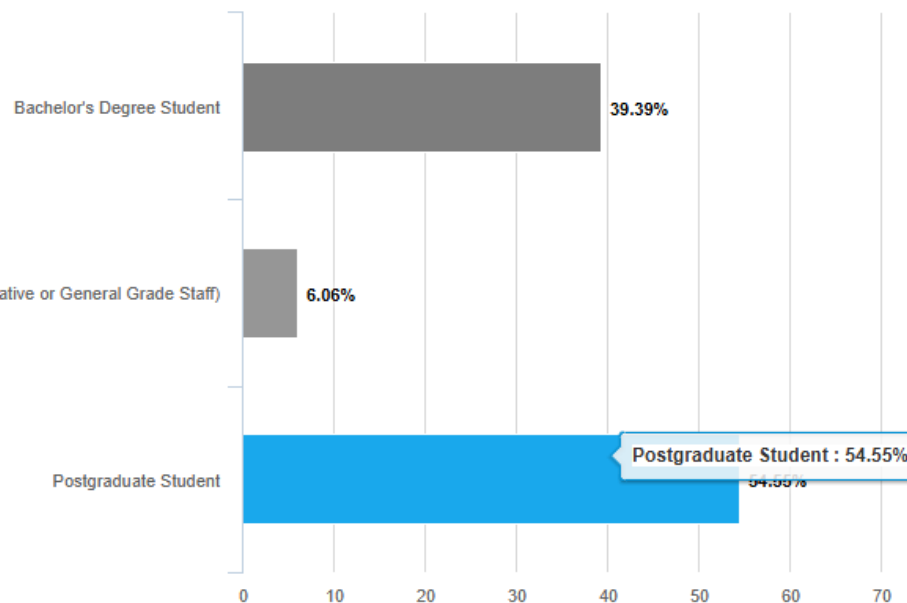
2024 JULAC LIBRARIES FORUM

INNOVATING IN THE DIGITAL ERA



Learning Strategies

Library Workshop Survey





Run Run Shaw Library

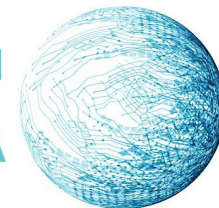
香港城市大學
City University of Hong Kong

JULAC



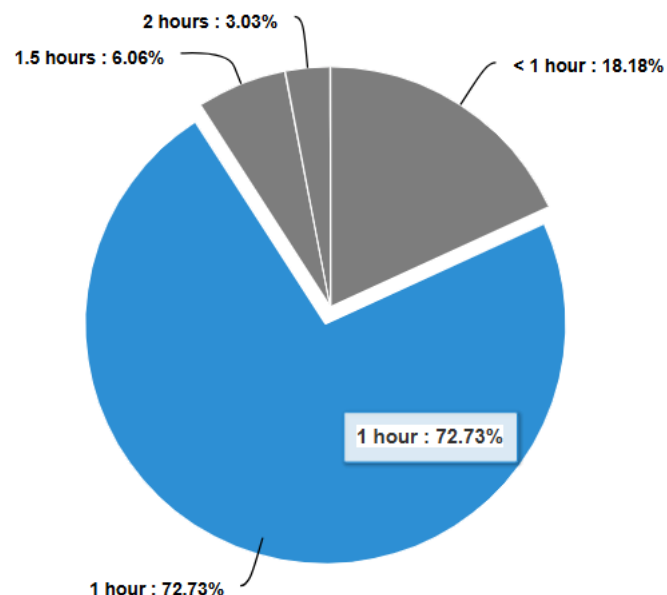
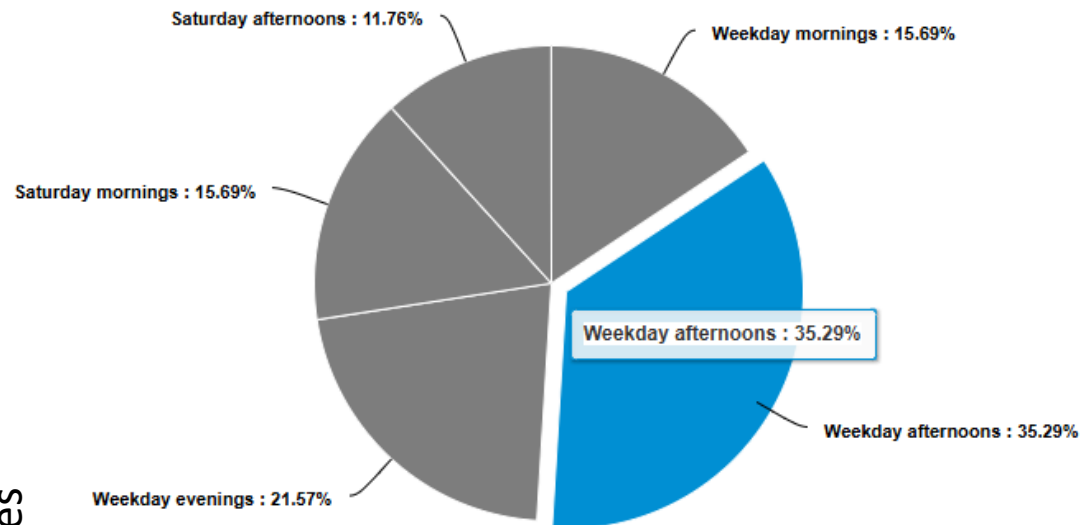
2024 JULAC LIBRARIES FORUM

INNOVATING IN THE DIGITAL ERA



Learning Strategies

Library Workshop Survey



Users Suggested Library Workshop Topics

Latex

Research Skills, Digital Marketing Analytics tools, Excel, etc.

APA style, EndNote, how to find resources effectively

What will we learn about **LLMs** in university GE/ CS courses, applications of LLMs in university projects

OpenRefine

Citation software, **Generative AI models and usage**. How to use CHATGPT properly e.g. tools to help executing the order more efficiently

Python, Statistical methods to **data analysis** using Excel

AI

computer science related

How to make presentation PPT, **Python**, APA style.

Searching methods, new technologies

Endnote

Canva

Law, looking for e-books



Run Run Shaw Library

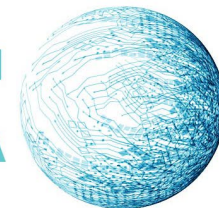
香港城市大學
City University of Hong Kong

JULAC



2024 JULAC LIBRARIES FORUM

INNOVATING IN THE DIGITAL ERA



AI LITERACY

- Using **AI Tools** to Facilitate the Research Process
- Introduction to AI Literacy, **GenAI**, and AI Tools
- Introduction to **Large Language Models** and their Applications

VISUALIZATION

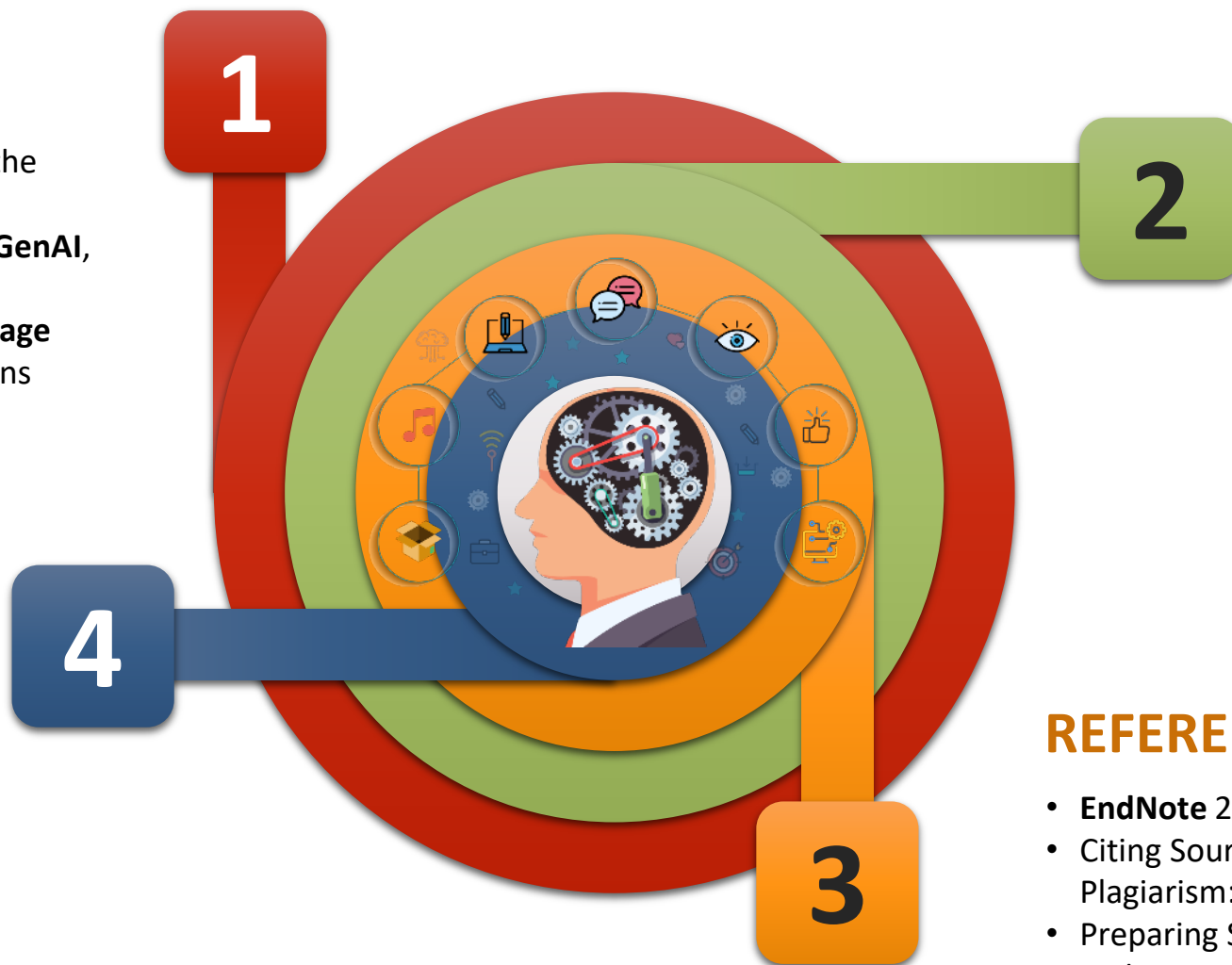
- **Tableau** Basics: Making Charts and Tables
- Graphic Design may be Simple (**Canva**)

DATA ANALYSIS

- Practical Statistical Analysis with **Excel** and **G*Power**
- Data Cleaning with **OpenRefine**
- Introduction to **R** for Statistical Analysis
- **Data Mining** Research with RapidMiner
- **Text Analysis** with Volant Tools

REFERENCING

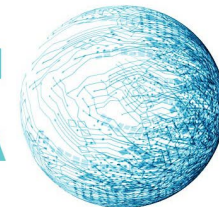
- **EndNote** 21 for Windows
- Citing Sources & Preventing Plagiarism: **APA**
- Preparing Scientific Documents with **LaTeX**
- Introduction to Mendeley Reference Manager



Learning Strategies

Digital Learning





Learning Lounge

Launched in February 2024

<https://libguides.library.cityu.edu.hk/learninglounge>

5 Key Features:

- 1. User-Friendly Interface**
 - Libguides + Panopto.
- 2. Diverse Topics (>39 videos)**
 - Covers a wide range of subjects.
- 3. Flexible Learning (>6,520 visits as of Oct 2024)**
 - Available 24/7 for self-paced learning.
- 4. Resources Availability**
 - Access to additional resources and materials.
- 5. Regular Updates**
 - New content and workshops added regularly.





Run Run Shaw Library

香港城市大學
City University of Hong Kong

The Learning Lounge

Library Workshop Recordings and Resources

My Learning

Academic Honesty

Digital Literacy

Library Databases

Library Resources

Discovery

Reference Management
Tools

Research Survival Skills

Legal Research

Searching Key Law
Databases


JULAC Webinar Series

Digital Literacy

Enhance your digital skills by exploring various practical skills such as data visualization tools, data management tools, AI tools, and web-scraping tools.

- Data Cleaning with OpenRefine
- Data Mining Research with RapidMiner
- Data Visualization Tool: Tableau
- Introduction to AI Literacy, Generative AI, and AI Tools
- Introduction to Large Language Models and their Applications
- Introduction to R for Statistical Analysis
- Practical Statistical Analysis with Excel and G*Power
- Preparing Scientific Documents with LaTeX
- Tableau Basics: Making Charts and Tables
- Text Analysis with Volant Tools
- Understanding the Creative Commons Licenses
- Using AI Tools to Facilitate the Research Process
- Web Scraping for Non-Technical Researchers

Data Cleaning with OpenRefine



(To view the video, click the above image and login with your CityU credential)


OpenRefine is a free, open-source tool for working with messy data. It cleans the data, transforms it from one format into another, and extends it with web services and external data.

In this session, attendees will learn the basic applications such as cleaning and transforming data, resolving inconsistencies in a data set, etc.

Duration: 1 hr

[Video](#) [Handout](#)

Data Mining Research with RapidMiner



(To view the video, click the above image and login with your CityU credential)

RapidMiner is a powerful and intuitive data science platform that enables users to perform a wide range of data analytics tasks to extract valuable insights from their data.

By the end of the workshop, participants will:

- understand the basic features of RapidMiner;
- create and train machine learning models using RapidMiner's intuitive visual interface, and gain insights into techniques such as decision trees and clustering.

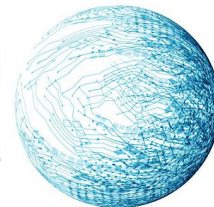
Duration: 1.5 hrs

[Video](#) [Handout](#)



2024 JULAC LIBRARIES FORUM

INNOVATING IN THE DIGITAL ERA



Powered by Panopto

Organizations - Library e-learning videos > Data Mining Research with RapidMiner

Search this recording

Details Data Mining Research with RapidMiner

Notes (Duration: 1 hr. 30 min.)

Bookmarks

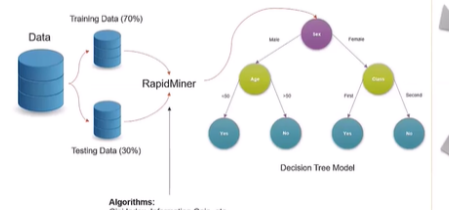
Hide

RapidMiner is a powerful and intuitive data science platform that enables users to perform a wide range of data analytics tasks to extract valuable insights from their data.

By the end of the workshop, participants will:

- understand the basic features of RapidMiner.
- create and train machine learning models using RapidMiner's intuitive visual interface, and gain insights into techniques such as decision trees and clustering.

Decision Tree – Modelling



Algorithms: Gini Index, Information Gain, etc.

Survive Yes/No?

Auto-play is disabled in your web browser. Press play to start.

37:59 -47:36

Learning Strategies



Get help

Ask a Librarian | Email
lbinf@cityu.edu.hk

WhatsApp us at 6798-7732

Zoom a Librarian (by
appointment)

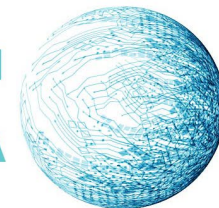
Call us at 3442-8395

Reach us at the Virtual Instruction
and Reference Help Desk

[More Contact Information](#)

Most Popular Videos (As of Oct 2024)

EndNote 21 for Windows	Introduction to R for Statistical Analysis
Using AI tools to facilitate the research process	Citing Legal Information
Preparing Scientific Documents with LaTeX	Lexis+ Hong Kong
Case Law Research	30 Statistics in 30 Seconds in Statista
Citing Sources & Preventing Plagiarism: APA	Introduction to Mendeley Reference Manager
Data Visualization Tool: Tableau	Finding Law Journals and Other Secondary Materials



24/7 Helpdesk: AI Voice Bot@Library



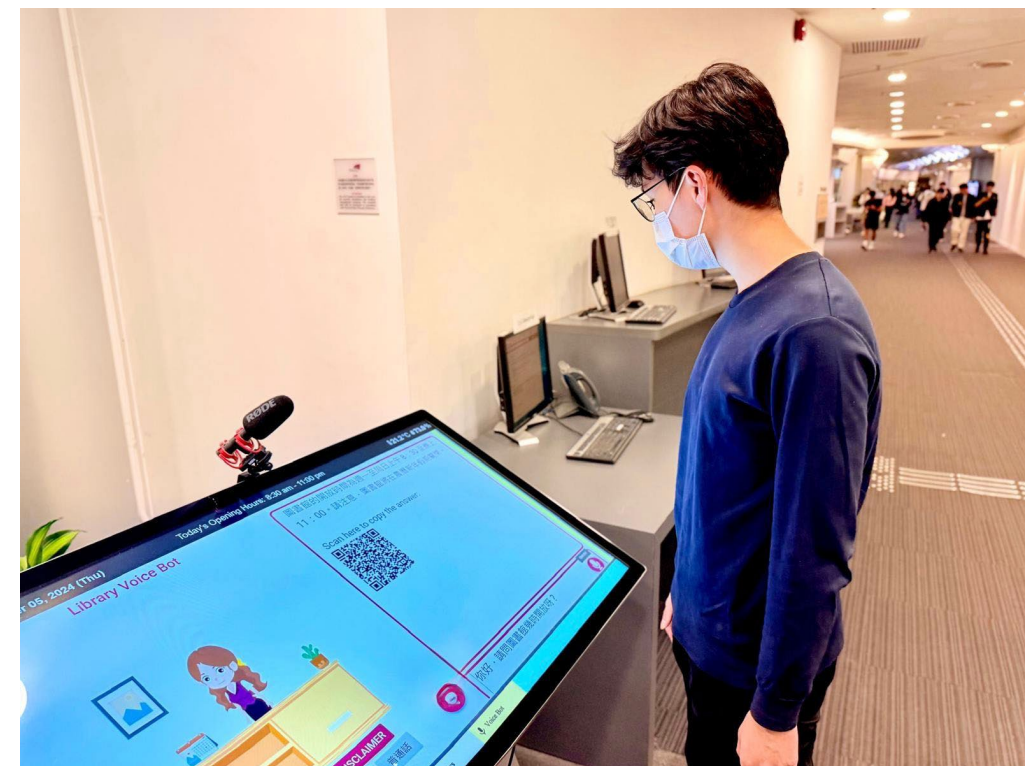
- Launched for 6 months



- 800 inquiries (As of today)

Highlights:

- Collaborative effort between Central IT and the Library.
- Combine the technologies of Speech AI and Generative AI.
- Available at the Library's main entrance kiosk.
- Support for multiple languages, including Cantonese, Mandarin, and English.
- Provides 24/7 helpdesk support.



Looking Forward:

- Enhance the content with new library services and resources.
- Explore other potential applications in the library.





Run Run Shaw Library

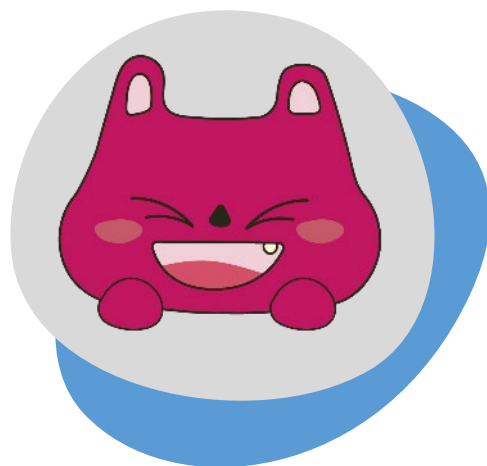
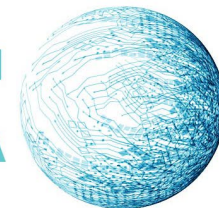
香港城市大學
City University of Hong Kong

JULAC



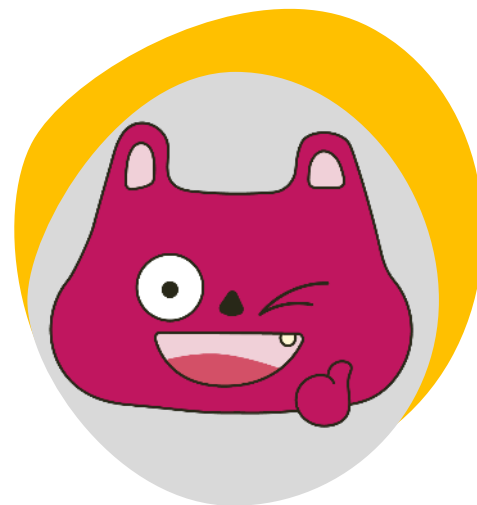
2024 JULAC LIBRARIES FORUM

INNOVATING IN THE DIGITAL ERA



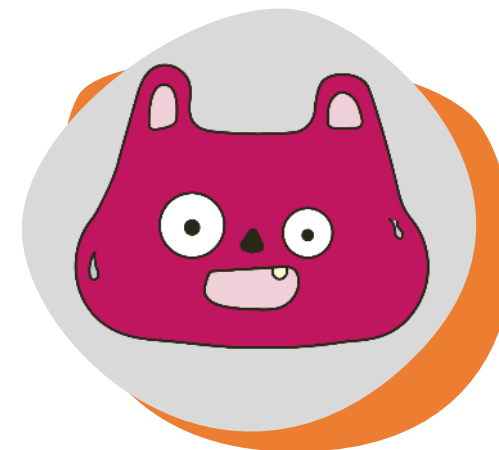
Satisfaction

Successful completion
Received positive feedback
Excellent collaborative effort
Learning & Growth



Opportunities

Cross-departmental collaboration
Process improvement
Creative problem-solving
Recognition & Visibility



Challenges

Tight deadlines
Resource limitations
Balancing priorities

Satisfaction,
Opportunities, and
Challenges





Run Run Shaw Library

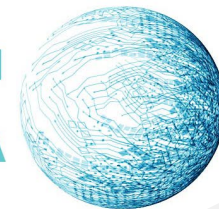
香港城市大學
City University of Hong Kong

JULAC



2024 JULAC LIBRARIES FORUM

INNOVATING IN THE DIGITAL ERA



Thank you



Run Run Shaw Library

香港城市大學
City University of Hong Kong

